

# ACR+ Conference . Genova . 27th October 2011

## Recycling Performance in Odense . Denmark

Presented by **Svend Byrial Poulsen**



# Odense Waste Management Company Ltd.



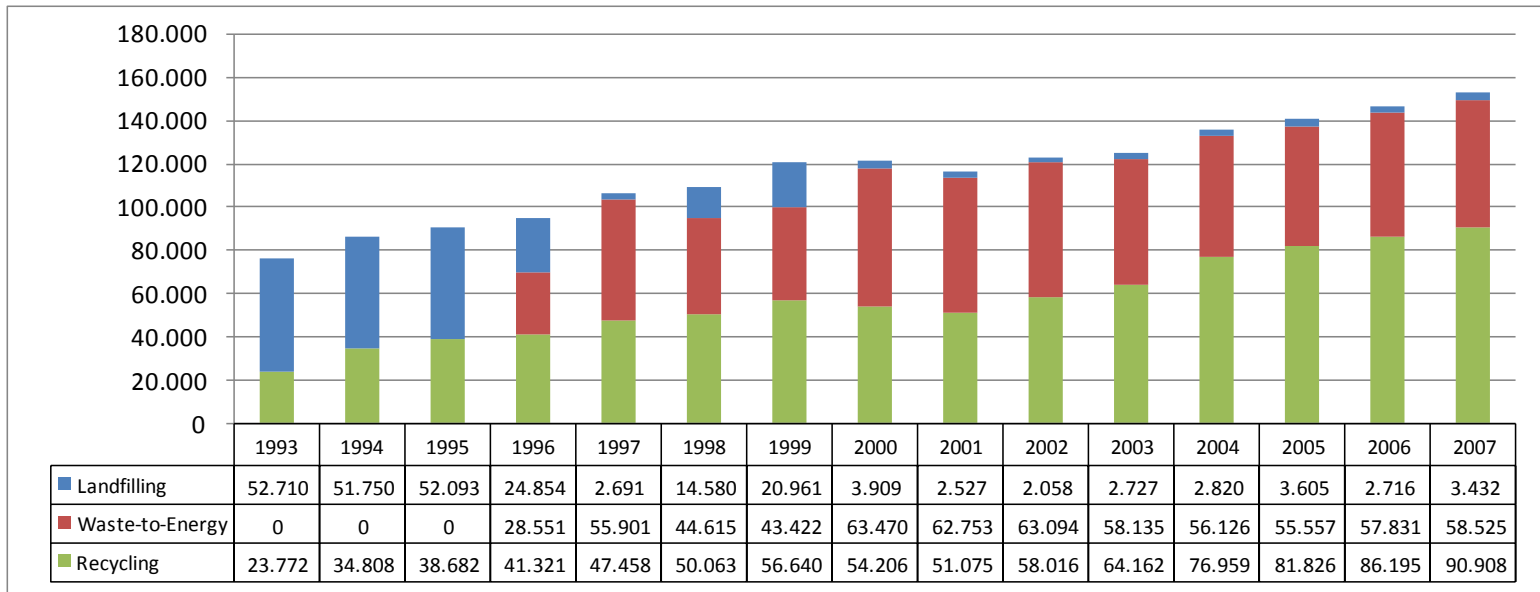
- Serving Denmark's 3. biggest city:
  - 190.000 inhabitants
  - 90.000 households
- Has functioned as municipal waste management department since 1882
- In 1994 it was transformed into a limited company owned by the municipality of Odense
- Around 180 employees
- Around 200 mio. DKK in annual turnover
- Not-for-profit company
- All services paid by the users

# Main Activities

- Collection of household refuse, hazardous waste including batteries and recyclable paper from 90.000 households
- Operation of recycling stations and bring banks
- Street cleaning
- Participation in operation of central sorting facility
- Operation of Odense Environmental Centre (landfill)
- Extraction of landfill gas from Stige Island old dumpsite
- Closure and aftercare of Stige Island old dumpsite



# Development in Amounts and Distribution of Household Waste 1993 - 2007





# Paper Collection

- Each household has a paper bin
- All types of paper: newspapers, magazines, circulars, letters, envelopes but no cardboard and no books
- 51% more paper has been collected since the bin was placed at household and not at centrally placed bring banks
- Amounts collected by OVMC at households in 2010: 11.338 tons (60 kg annually per person)
- Is sold to a local waste paper company which sorts it and sells it to paper plants in Denmark, Sweden, Germany etc.



# Collection of Glass

- App.150 glass containers located in central spots in Odense
- In 2010 1.114 tonnes of glass and bottles were put in the glass containers
- Is sold to a local glass company who cleans and sells bottles and glass. Some are melted and made into new glass products



# Recycling Stations

8 Stations - each with more than 30 containers for different types of waste

- Citizens bring their waste in car, trailer, bicycle, wagons
- In 2010 more than 80 000 tons were received
- Citizens generally good at sorting – understanding that waste is a valuable resource
- Signs are developed together with workers at recycling stations and tested on citizens
- Good ideas from citizens are taken seriously
- **Odense has reached one of the highest recycling percentages in Denmark:**
- 86 % of the bulky waste is recycled
- 11 % is incinerated
- 3 % is landfilled

